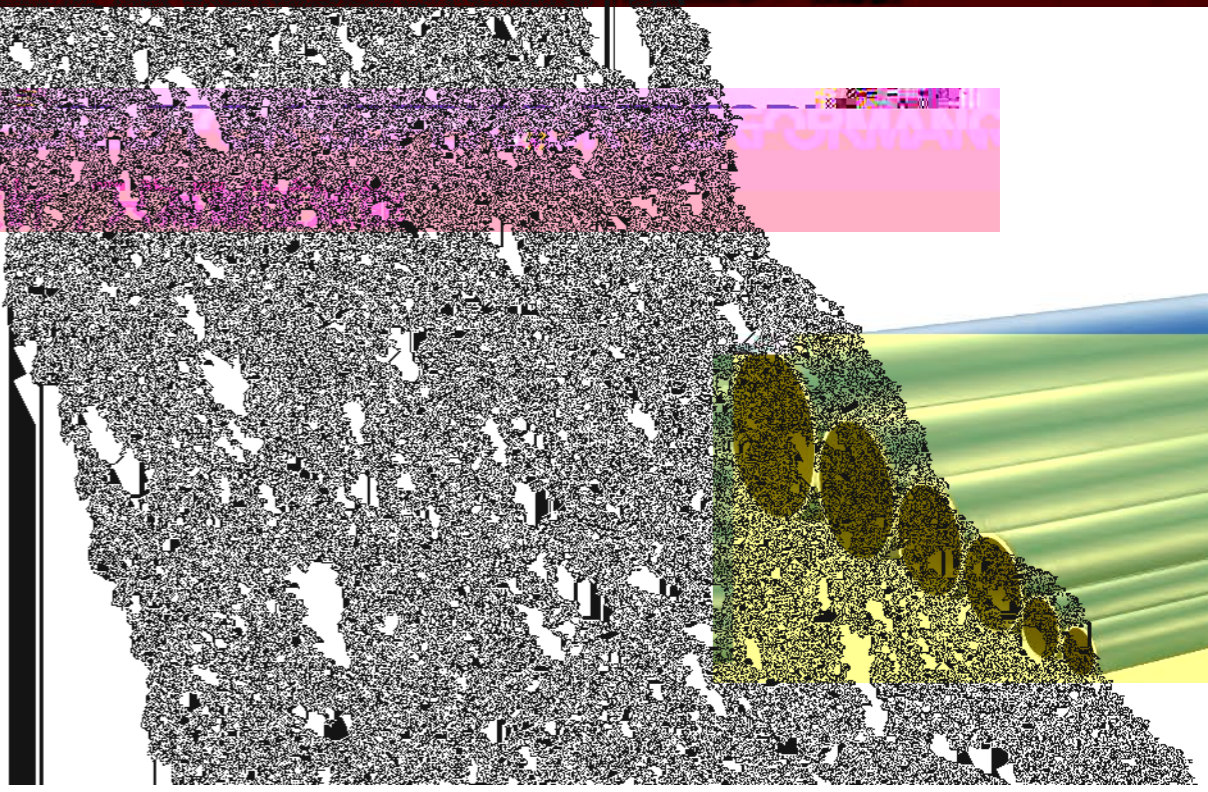
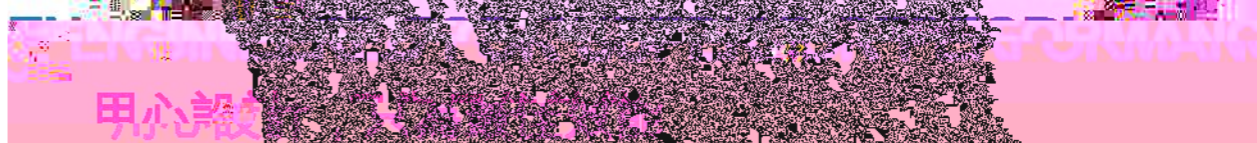
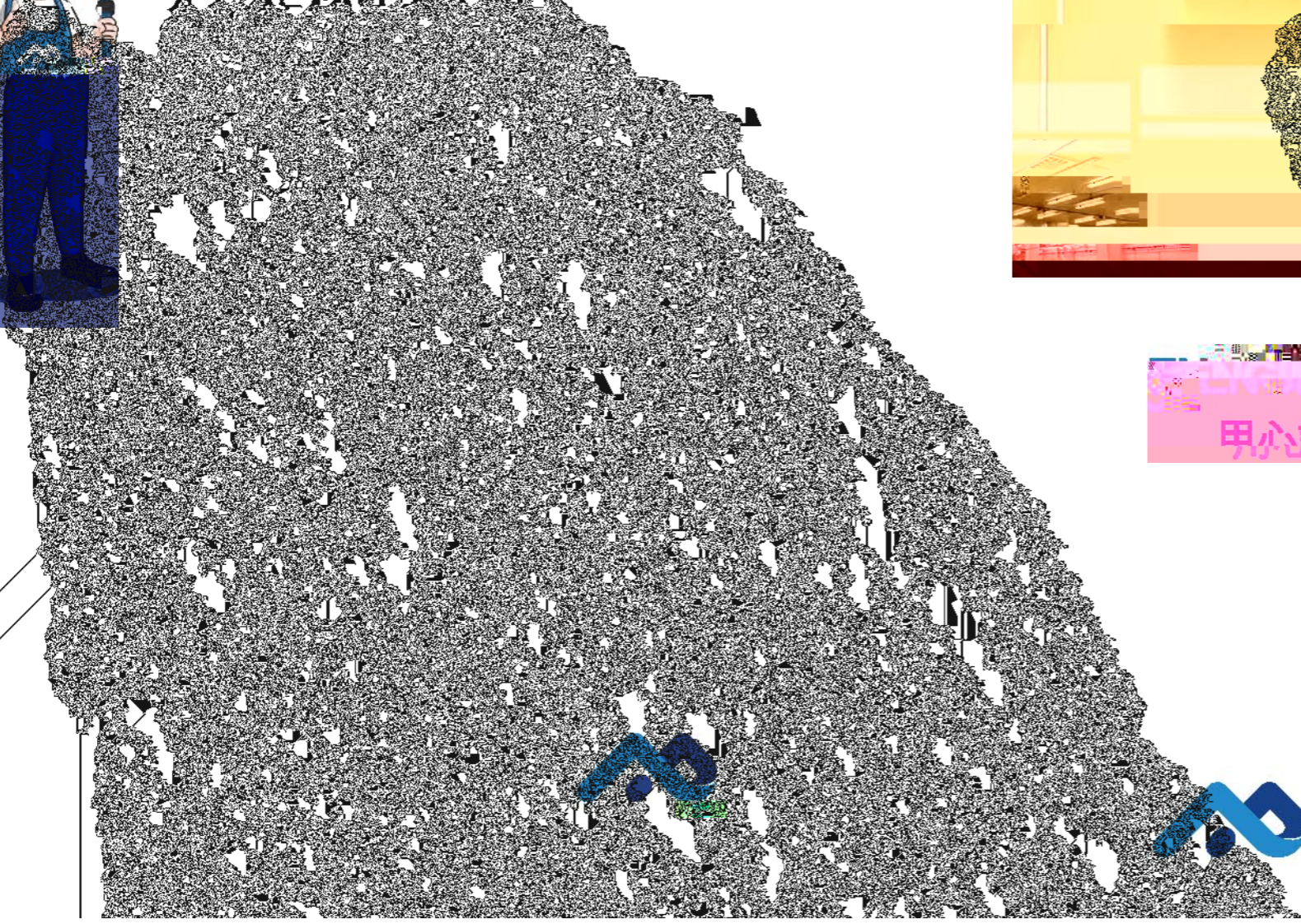


We provide superior performing compressed air & gas systems with





Superior Reliability & Longevity 最佳可靠性和使用年限

- Highly durable materials resistant to corrosion, vibration, thermal variation, and outdoor weather conditions.
- Metal clamshell connectors for all diameters are stronger and more durable versus polymer fittings.
- Unique grab ring design (20-50mm) and lugged ring (63-200mm) allows for zero risk of disconnection.
- Patented active concentric seals provide leak free performance, even in high vibration applications. Seal lifespan is double that of industry competitors.
- 耐腐蝕金屬材質與聚合物材質相比，强度高，壽命長，有效抵抗銹蝕，振動，熱脹冷縮及室外安裝的惡劣環境。
- 專利的抱箍式快插接頭技術，壽命是普通旋插式的一倍，並且更加穩定及抗衝擊。
- 專利設計的主動式壓力密封圈，耐壓更高，壽命更長，杜絕洩漏隱憂。

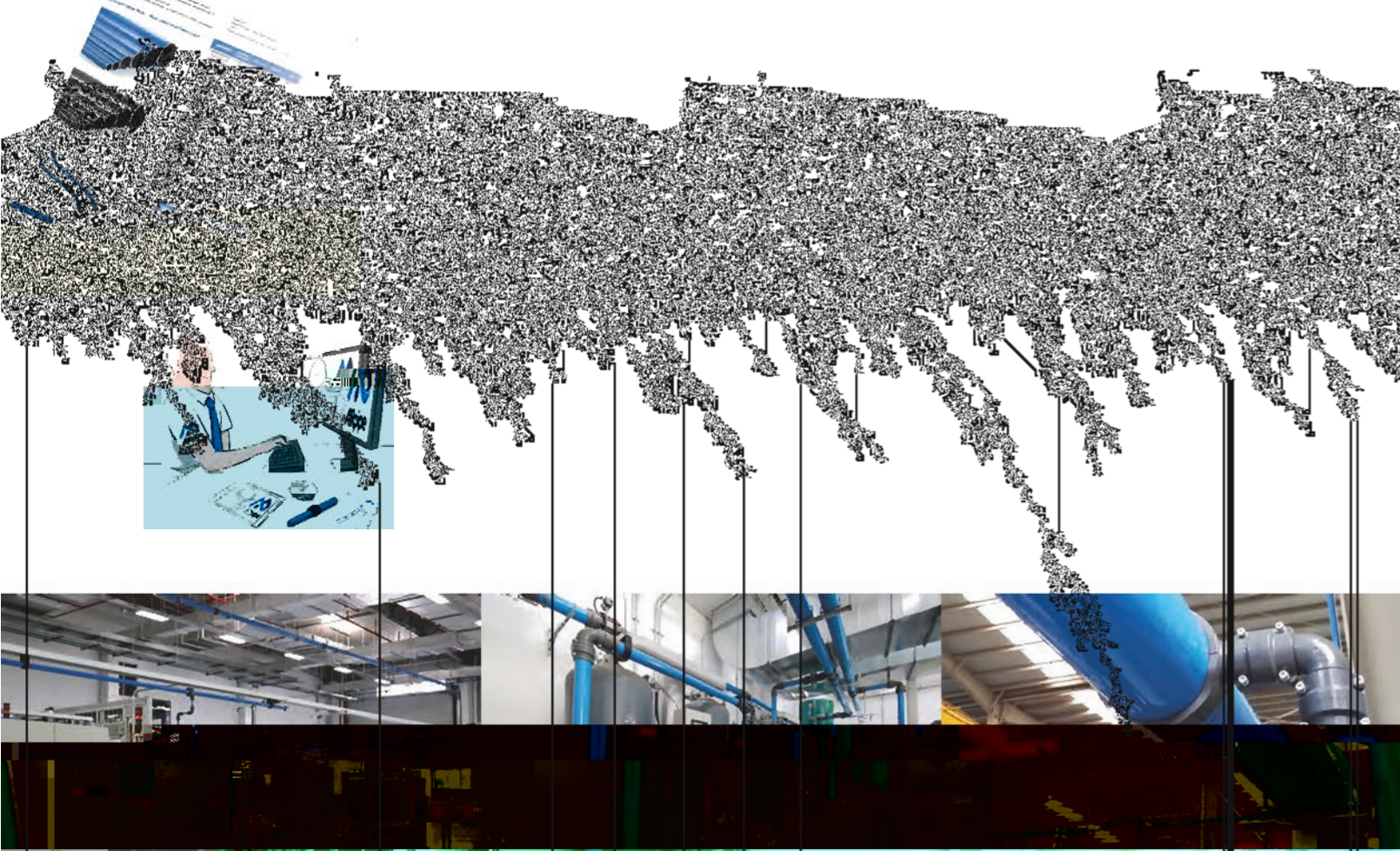
Quick & Easy Modular Installation 便捷的模組化安裝

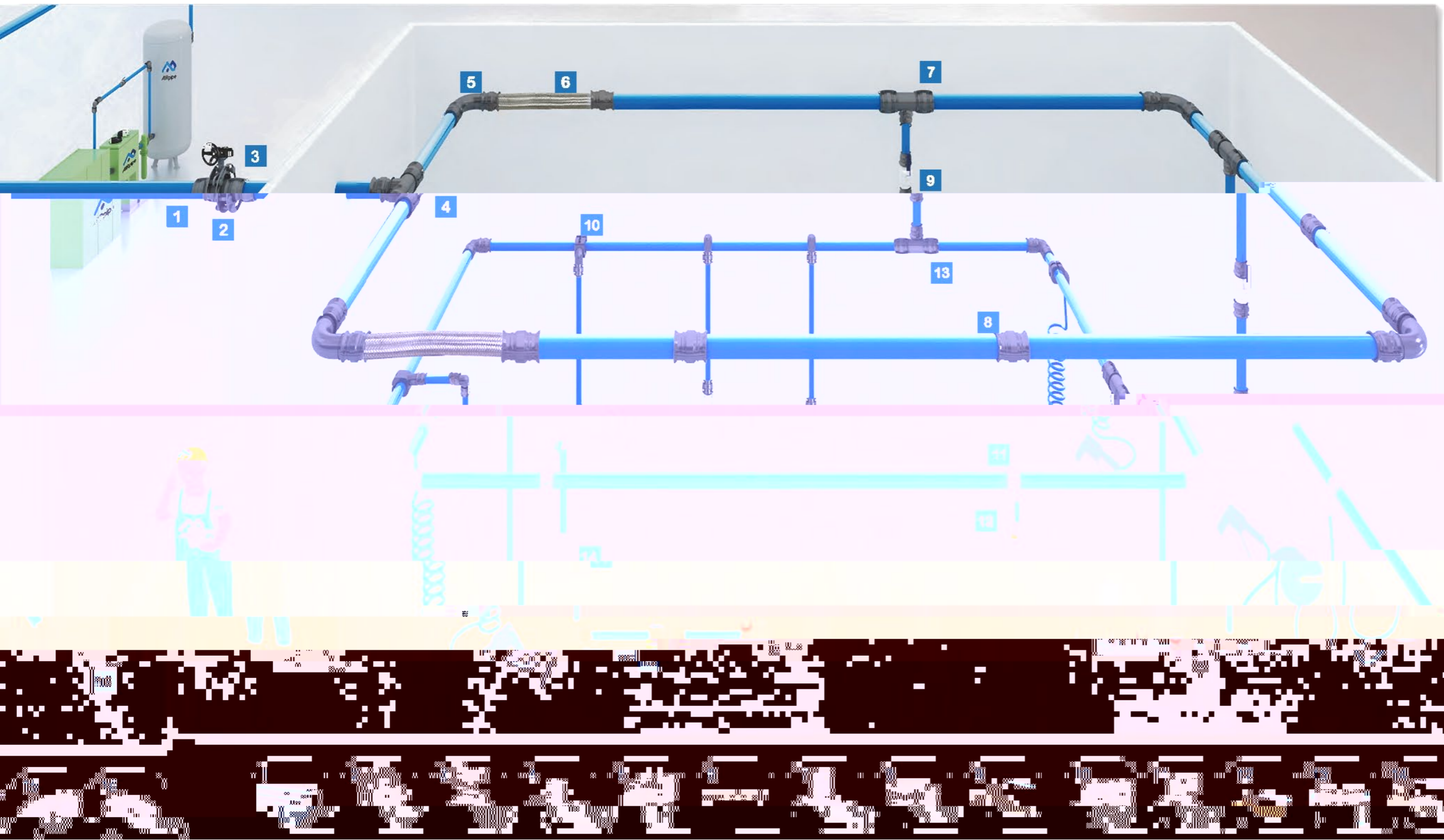
- Complete range of pipe, fittings and accessories works easily for new projects renovations & extensions.

Energy & Cost Savings 能源及成本節省

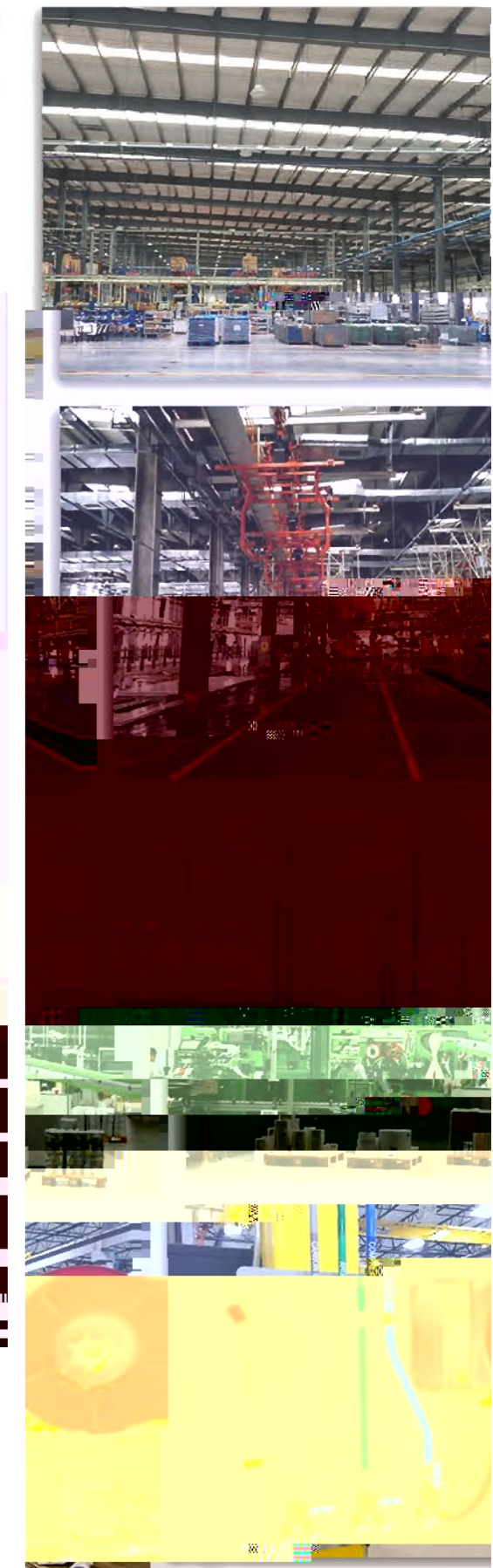
- 1
- 2
- 3
- 4
- 5

www.airpipedtech.com





- | | | | |
|---|----------------|---|---|
| 1 | 5 ^F | 5 | 5 |
| 2 | 6 ^F | 6 | 6 |
| 3 | 7 ^F | 7 | 7 |
| 4 | 8 ^F | 8 | 8 |



Product Range & Features

產品範圍和特性

Rigid Aluminum Pipe 剛性鋁管

- Up to max.200mm diameter - 200m³/min flow single line.
- High-quality powder coating and colors customization.
- Designed for compressed air, vacuum, and inert gases.
- Light-weight & corrosion-free.
- 管徑最大200mm，最大流量200m³/min
- 高級粉體塗裝噴塗，耐久防腐，顏色可以定制
- 適用於所有噴油或無油壓縮空氣及惰性氣體
- 重量輕，防火UL90，可全天候室外安裝

- Quick connection.
- Available for BSP/NPT thread, flange, plug-in connection type.
- High-flow design ensures optimal performance.
- 一體式快接口，快速匹配管接頭
- 可選BSP或NPT標準螺紋，包括所有相關配件
- 高流速內徑設計耐久防腐

Pipe Connectors 快速管接頭

Flexible Hoses 彈性耐壓管

SLIVER ALUMINUM PIPE

AIRpipe	DN	OD	ID
301 00 0100 01	20	20.1	17.5
301 00 0200 01	25	25.1	22.5
301 00 0400 01	40	40.1	36.5
301 00 0500 01	50	50.1	45.7
301 00 0600 01	63	67.6	63.0
301 00 0700 01	80	84.8	80.0
301 00 0800 01	100	101.8	96.8
301 00 0900 01	150	153.0	147.5
301 00 1000 01	200	205.0	197.8

*2.9M length please contact local sales.

GREEN ALUMINUM PIPE 綠色鋁管

5.8M Length

AIRpipe	DN	OD	ID
301 00 0100 03	20	20.1	17.5
301 00 0200 03	25	25.1	22.5
301 00 0400 03	40	40.1	36.5
301 00 0500 03	50	50.1	45.7
301 00 0600 03	63	67.6	63.0
301 00 0700 03	80	84.8	80.0
301 00 0800 03	100	101.8	96.8
301 00 0900 03	150	153.0	147.5

SLIVER ALUMINUM PIPE

AIRpipe	DN	OD	ID
301 00 0100 02	20	20.1	17.5
301 00 0200 02	25	25.1	22.5
301 00 0400 02	40	40.1	36.5
301 00 0500 02	50	50.1	45.7
301 00 0600 02	63	67.6	63.0
301 00 0700 02	80	84.8	80.0
301 00 0800 02	100	101.8	96.8
301 00 0900 02	150	153.0	147.5
301 00 1000 02	200	205.0	197.8

*2.9M length please contact local sales.

END CAP 堵頭

AIRpipe	DN
302 08 0100 02	20
302 08 0200 02	25
302 08 0400 02	40
302 08 0500 02	50

*Union connector Included

EQUAL TEE CONNECTORS

302 02 0100 01	20
302 02 0200 01	25
302 02 0400 01	40
302 02 0500 01	50
302 02 0601 05	63
302 02 0701 08	80
302 02 0801 08	100
302 02 1001 05	150
302 02 1101 05	200

EQUAL TEE 等徑三通

AIRpipe	DN
302 05 0100 02	20
302 05 0200 02	25
302 05 0400 02	40
302 05 0500 02	50

*Union connectors included

REDUCING PIPE TO DIFFERENT CONNECTOR 異徑管對管

*Use three union connectors

FIXTURE CLAMPS & ACCESSORIES
管夾





CLAMP SPACER
管夾墊



VORTEX FLOW METER
渦街流量計



THREADED ADAPTORS
轉接頭





PRESSURE METER
氣體壓力錶



ATMOLYSIS BAG
分子篩





DRILL (TAPPER)
鑽頭

DRILL HOLDER
鑽頭夾具



MARKER
記號器



ALUMINUM PIPE DEBURRER
鋁管去毛刺器



SPANNERS
水泵鉗



ALUMINUM PIPE CUTTER
鋁管切割器



ELECTRIC PIPE CUTTER
電動鋁管切割機



FIXING BOLTS
螺栓



SQUARE STEEL
方鋼



ADJUSTABLE BRACKET
可伸縮支架



GRIDER CLAMP
老虎鉗



SQUARE STEEL CLAMP
壓板



PIPE BENDING
彎管器



WALL MOUNTED BRACKET
懸臂支架



UNIVERSAL BEAM SUSPENDER
外向抱箍吊扣



FIXTURE CLAMPS & ACCESSORIES
萬向抱箍



WIRE SUSPENSION CABLE
鋼絲繩



LUGGING MACHINE
凸管機



Superior Reliability!

最佳可靠性

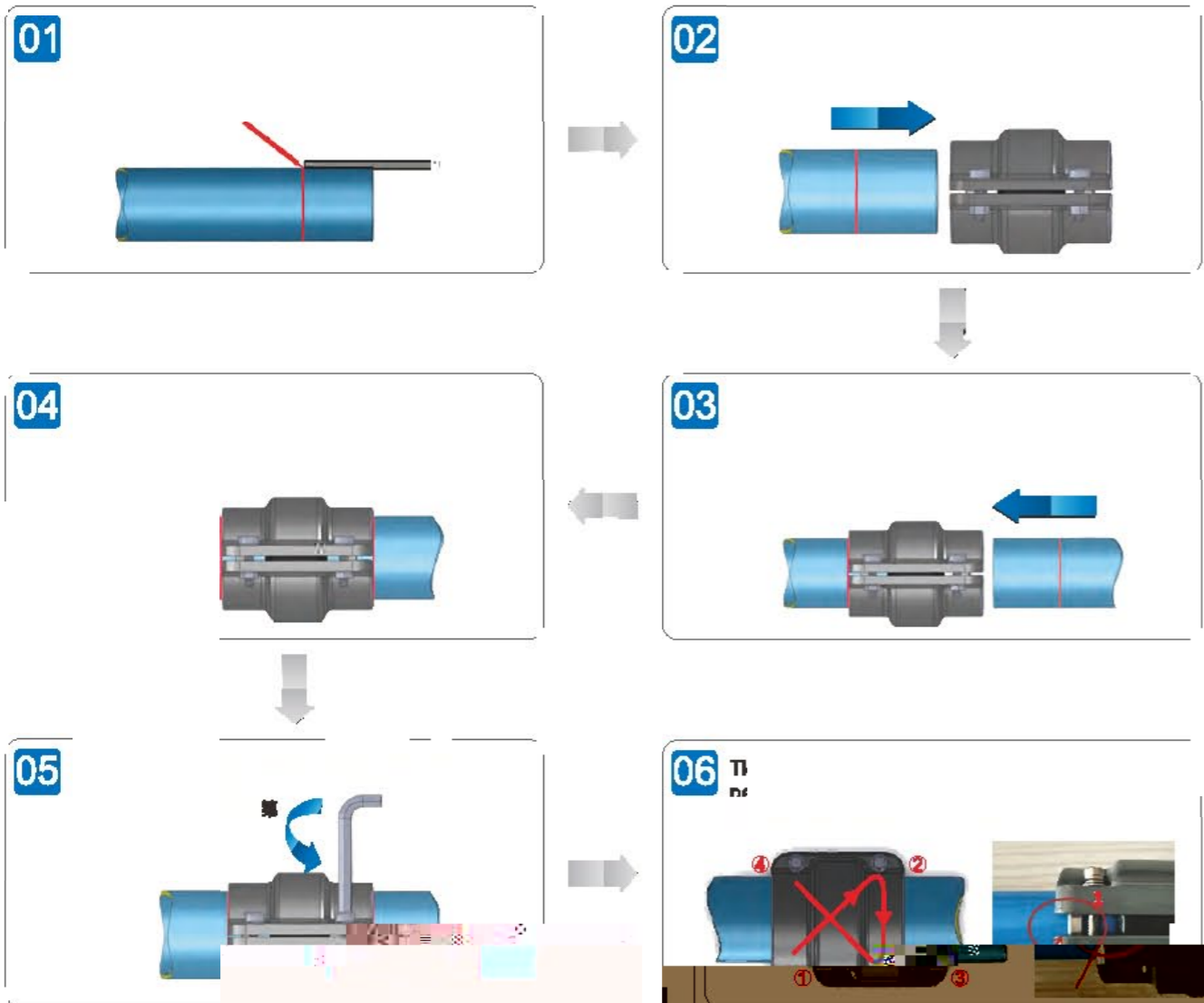


Insertion Depth S For DN20-DN50 Connector
DN20-DN50 (3/4" - 2") 管路安裝插入深度S

DN	Insertion depth S (mm)	插入深度S (mm)
50		39

•	50	39
•		

Installation Guide for DN20-DN50 安裝指導DN20-DN50 (3/4" - 2")

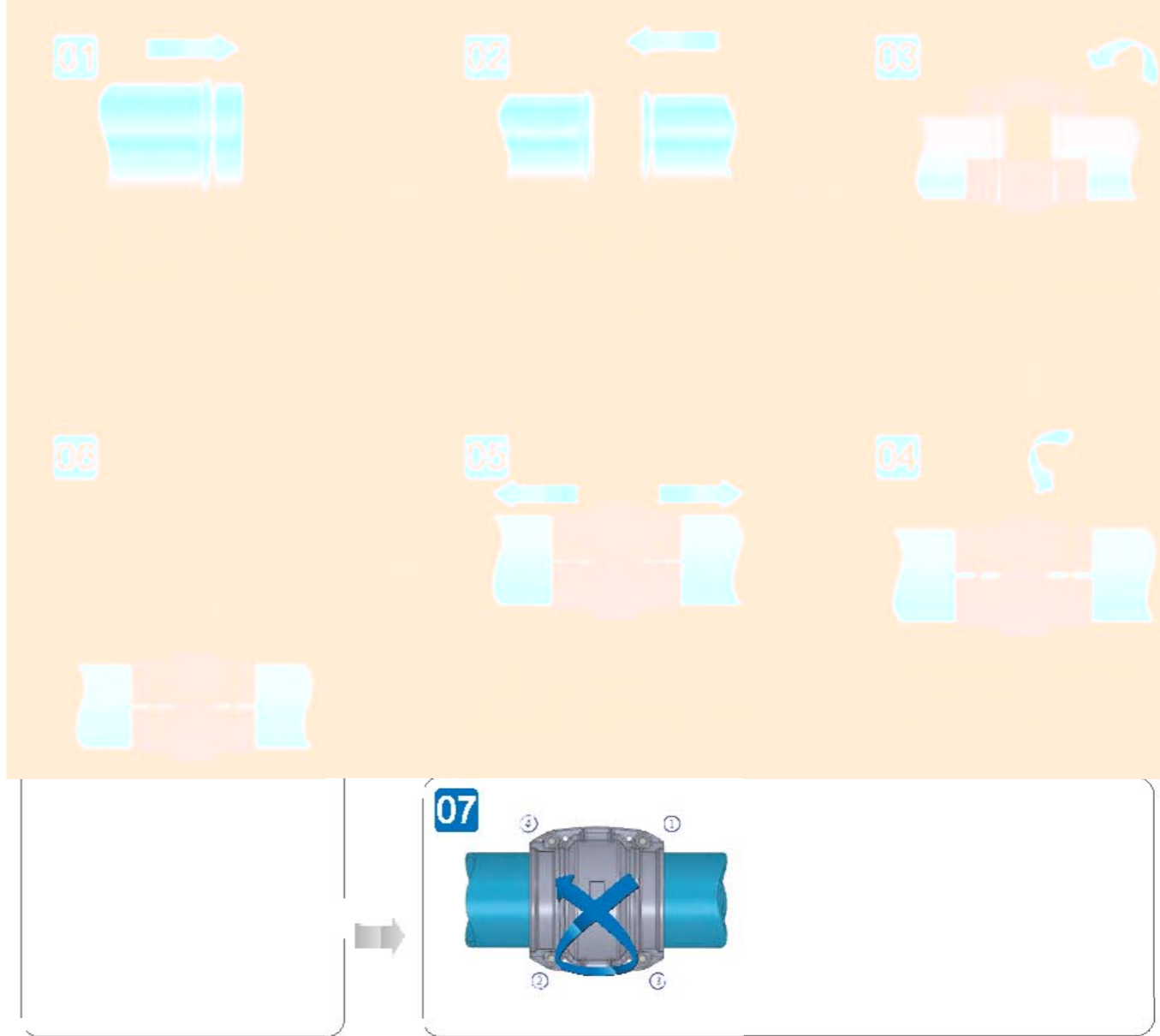


Deburr & Chamfer The Outer and Inner Edges Before Installation
安裝前去除管端切口內外的毛邊

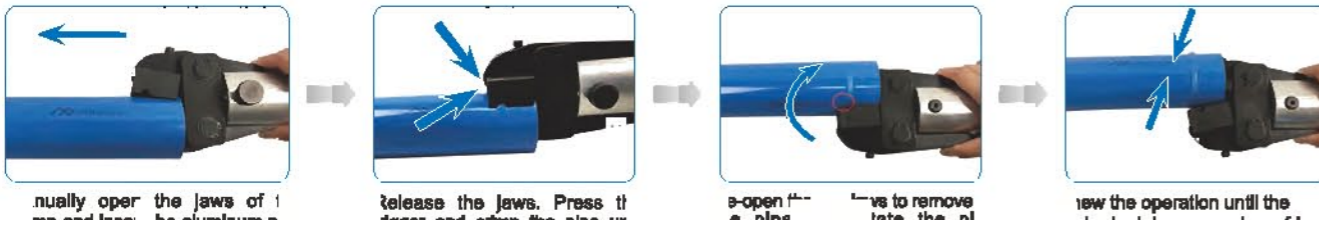
- |
- |



Installation Guide for DN63-DN200 安裝指導DN63-DN200 (2 1/2" - 8")



Hand-held hydraulic lugging machine operation requirements 手持液壓凸管器作業要求



Number of lugs for each diameter: 各規格凸管器

AIRPIPE DN83 DN90 DN100 DN150 DN200

Note: Do not overlap the lugs

DN	H(mm)
83	

(Min.) (Max.)

Sizing Chart for Quick Drops 快換尺寸表

Dr 鑽頭	Dr 1/2 鑽頭	DN(MM)	Quick Drops (PN)	快換 (PN)
301 35 0005 01	301 35 0005 02	301 35 0005 05	Φ61	302 10 1004 01 302 10 1005 01 302 10 1104 01 302 10 1106 01

Flow 管流速度 N m ³ /h	50M	100M	150M	200M	300M	500M	750M	1000M	1500M	2000M
20	20	20	20	20	20	20	20	20	20	20
30	30	30	30	30	30	30	30	30	30	30
40	40	40	40	40	40	40	40	40	40	40
50	50	50	50	50	50	50	50	50	50	50
60	60	60	60	60	60	60	60	60	60	60
70	70	70	70	70	70	70	70	70	70	70
80	80	80	80	80	80	80	80	80	80	80
90	90	90	90	90	90	90	90	90	90	90
100	100	100	100	100	100	100	100	100	100	100
120	120	120	120	120	120	120	120	120	120	120
150	150	150	150	150	150	150	150	150	150	150
180	180	180	180	180	180	180	180	180	180	180
200	200	200	200	200	200	200	200	200	200	200
250	250	250	250	250	250	250	250	250	250	250
300	300	300	300	300	300	300	300	300	300	300
350	350	350	350	350	350	350	350	350	350	350
400	400	400	400	400	400	400	400	400	400	400
450	450	450	450	450	450	450	450	450	450	450
500	500	500	500	500	500	500	500	500	500	500
550	550	550	550	550	550	550	550	550	550	550
600	600	600	600	600	600	600	600	600	600	600
650	650	650	650	650	650	650	650	650	650	650
700	700	700	700	700	700	700	700	700	700	700
750	750	750	750	750	750	750	750	750	750	750
800	800	800	800	800	800	800	800	800	800	800
850	850	850	850	850	850	850	850	850	850	850
900	900	900	900	900	900	900	900	900	900	900
950	950	950	950	950	950	950	950	950	950	950
1000	1000	1000	1000	1000	1000	1000	1000	1000	1000	1000

Technical Specifications 工況範圍

- 適用
- 適用
- 適用
- 適用
- 適用

Qualification & Standards 符合規範和標準



Engineered for Superior Performance 產品設計，只為最佳服務

we are at your **SERVICE**
我們始終在您的身邊

