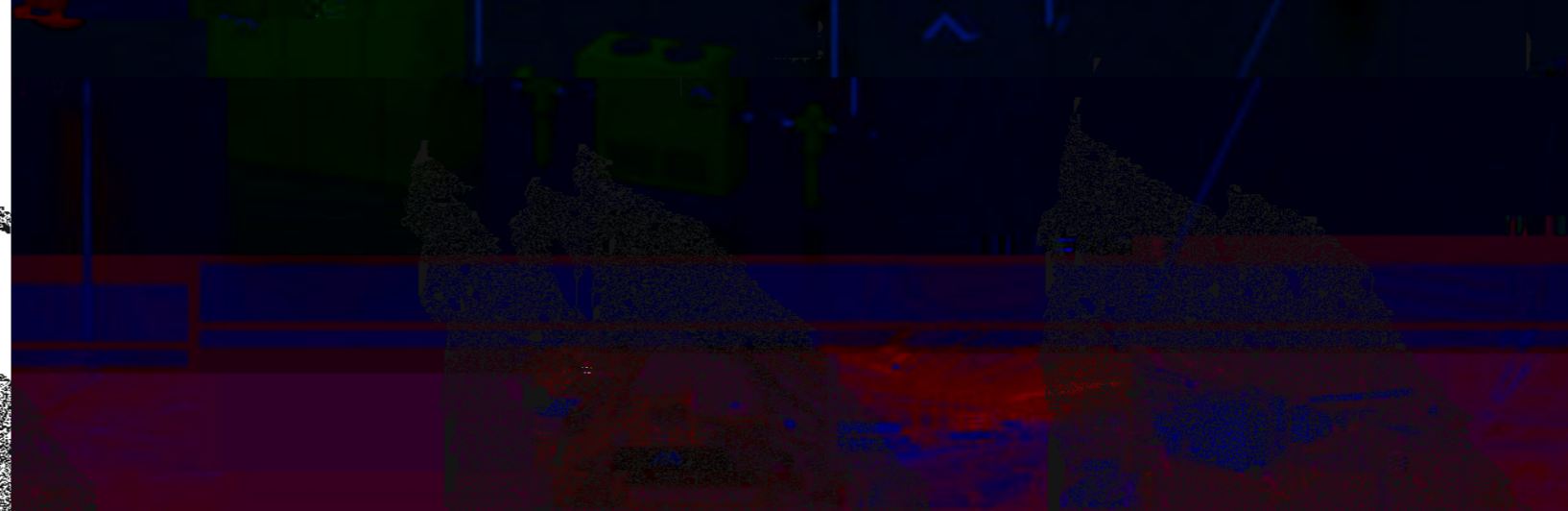
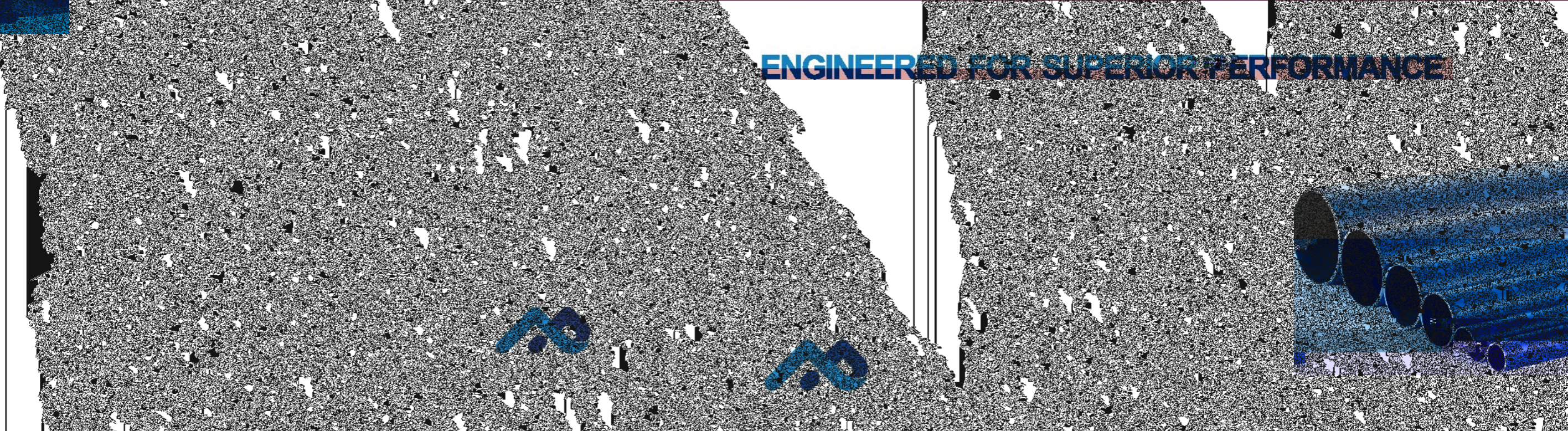


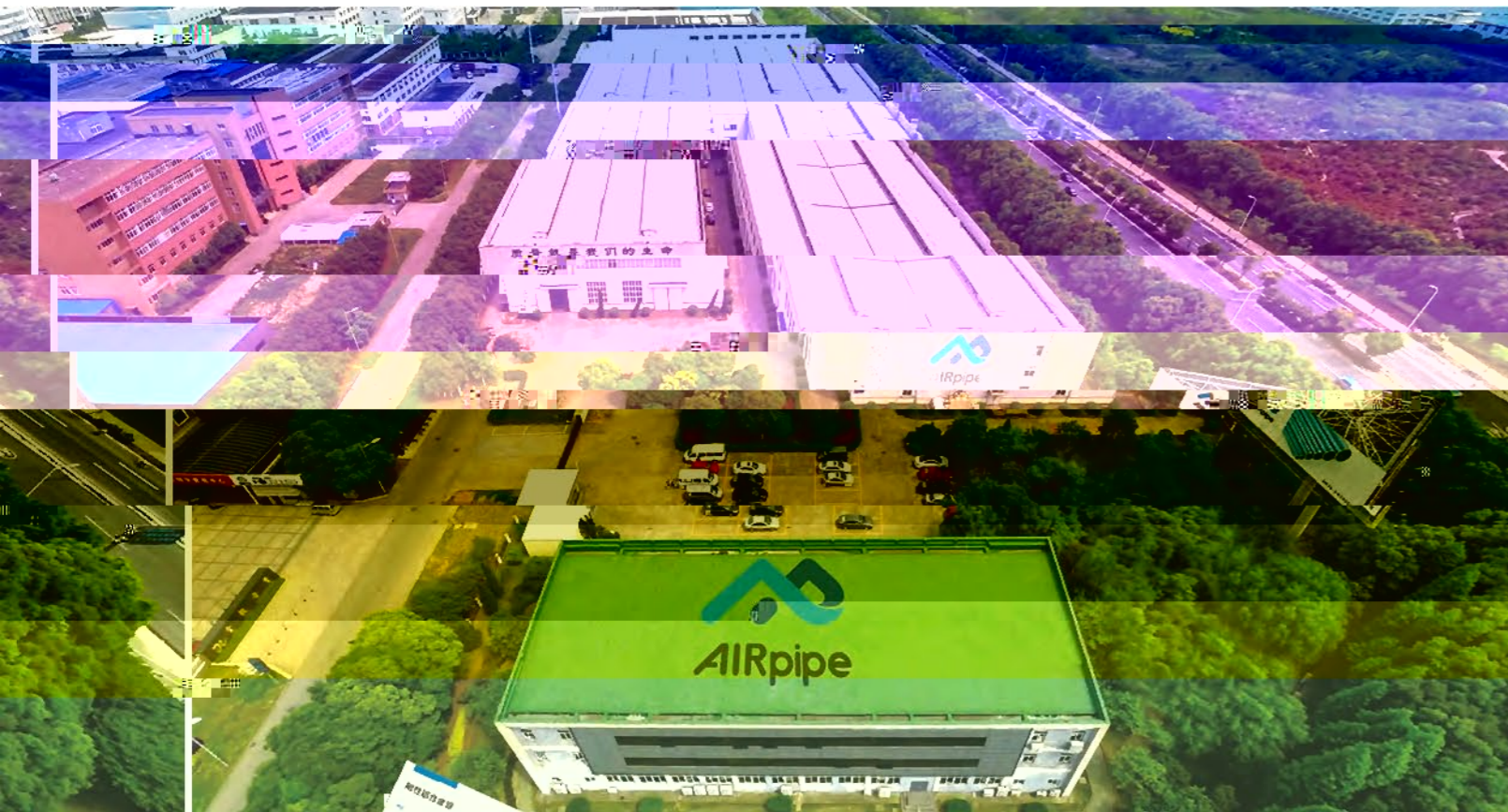


We provide superior
performing compressed air



ENGINEERED FOR SUPERIOR PERFORMANCE





Superior Reliability & Longevity

-
- IV
-
- D

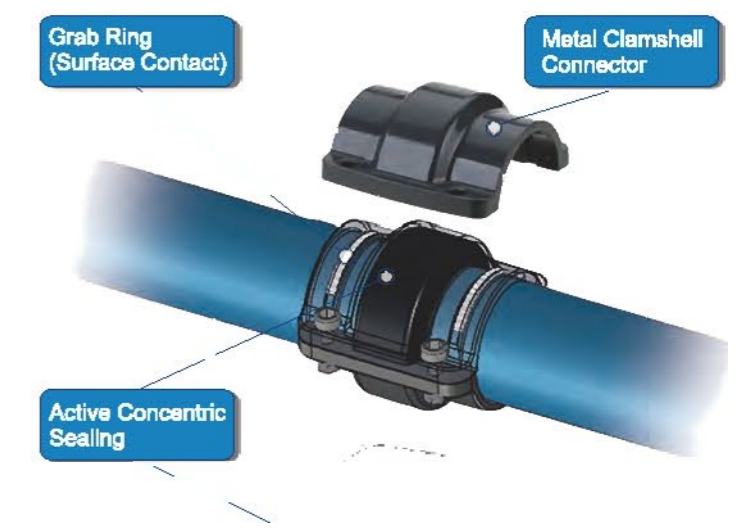


Energy & Cost Savings

-
- C

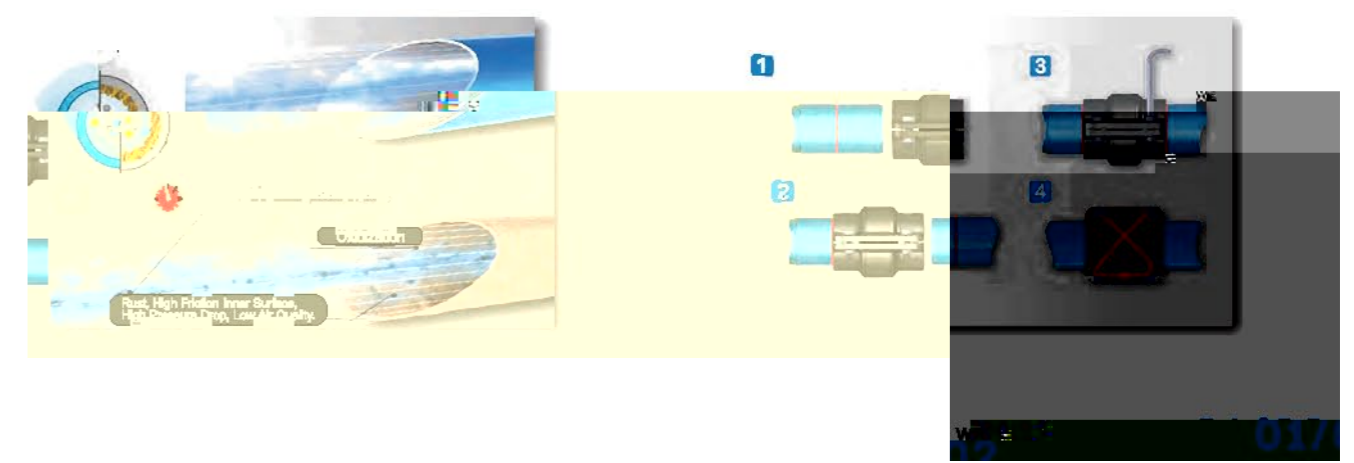
Quick & Easy Modular Installation

- C
-
- R
- C



Dual Performance

- Surface contact and active sealing
- Working Pressure up to 16bar
- 20 year life



ALUMINUM JOINT
MALE THREAD

AIRpipe	BSP	DN	Length
302 17 0100 02	20	1/2"	
302 17 0101 02	20	3/4"	
302 17 0200 02	25	1/2"	
302 17 0201 02	25	3/4"	
302 17 0202 02	25	1"	
302 17 0402 02	40	1"	
302 17 0403 02	40	1 1/4"	
302 17 0404 02	40	1 1/2"	
302 17 0405 01	40	2"	
302 17 0504 02	50	1 1/2"	
302 17 0505 02	50	2"	

*Union connector Included



*Union connector Included

QUICK DROP

302 17 0605 01	63	2"
302 17 0606 01	63	2 1/2"
302 17 0706 01	80	2 1/2"
302 17 0707 01	80	3"

*Use one union connector



ALUMINUM ELBOW


AIRpipe	BSP	DN	Length
302 15 0100 01	20	1/2"	
302 15 0101 01	20	3/4"	
302 15 0200 01	25	1/2"	
302 15 0202 01	25	1"	
302 15 0404 01	40	1 1/4"	
302 15 0505 01	50	2"	

*Union connector Included



QUICK DROP FEMALE THREAD


AIRpipe	BSP	DN	Length
302 11 0200 03	25	1/2"	
302 11 0400 03	40	1/2"	
302 11 0401 02	40	3/4"	



VALVED WALL BRACKET


AIRpipe	DN	BSP	Ports
302 52 0102 03	20	1 PORT 1/2"	
302 52 0202 03	25	1 PORT 1"	
302 52 0204 03	25	1 PORT 1/2"	
302 52 0404 03	40	1 PORT 1 1/4"	
302 52 0505 03	50	1 PORT 2"	
302 52 0606 01	63	1 PORT 2 1/2"	

*Union connector Included




AIRpipe	DN	BSP	Ports
302 52 0101 03	20	2 PORTS 1/2"	
302 52 0201 03	25	2 PORTS 1/2"	

*Union connector Included



AIRpipe	DN	BSP	Ports
302 52 0105 03	20	2 PORTS 1/2", 75°	
302 52 0205 03	25	2 PORTS 1/2", 75°	

*Union connector Included



SWING CHECK VALVE

AIRpipe	BSP	DN	Type
302 80 0400 02	40	Cast iron	
302 80 0500 02	50	Cast iron	

*Union connectors Included

302 80 0600 01	63	Cast iron
302 80 0700 01	80	Cast iron
302 80 0800 01	100	Cast iron
302 80 1000 01	150	Cast iron
302 80 1100 01	200	Cast iron


*Use two union connectors

AIRpipe	BSP	DN	Type
302 80 0401 02	40	Stainless steel	
302 80 0501 02	50	Stainless steel	

*Union connectors included

302 80 0601 01	63	Stainless steel
302 80 0701 01	80	Stainless steel
302 80 0801 01	100	Stainless steel
302 80 1001 01	150	Stainless steel
302 80 1101 01	200	Stainless steel

*Use two union connectors



FLANGE



All flanges contain bolts and flange gasket

AIRpipe	BSP	DN	Length
302 70 0600 01	63		
302 70 0700 01	80	80	
302 70 0800 01	100	100	
302 70 1000 01	150	150	
302 70 1100 01	200	200	

FLANGE (CAST IRON) FEMALE THREAD

All flanges contain bolts and flange gasket

AIRpipe	BSP	DN	Length
302 79 0202 01	25	1"	
302 79 0404 01	40	1 1/4"	
302 79 0505 01	50	2"	
302 79 0602 01	65	1"	
302 79 0804 01	85	1 1/4"	
302 79 0805 01	85	2"	
302 79 0702 01	80	1"	

FLEXIBLE HOSES

Straight connection, Rubber

AIRpipe	DN	Length (MM)
302 55 0100 04	20	570
302 55 0200 04	25	570
302 55 0400 04	40	800
302 55 0500 04	50	600

*Unions connectors Included



30° Angle connection, Rubber

AIRpipe	DN	Length (MM)
302 55 0401 04	40	1200
302 55 0501 04	50	1380
301 55 0601 01	63	1200
301 55 0701 01	80	1700
301 55 0801 01	100	1700

*Union connectors Included

Straight connection, metal

AIRpipe	DN	Length (MM)
301 55 0600 01	63	520

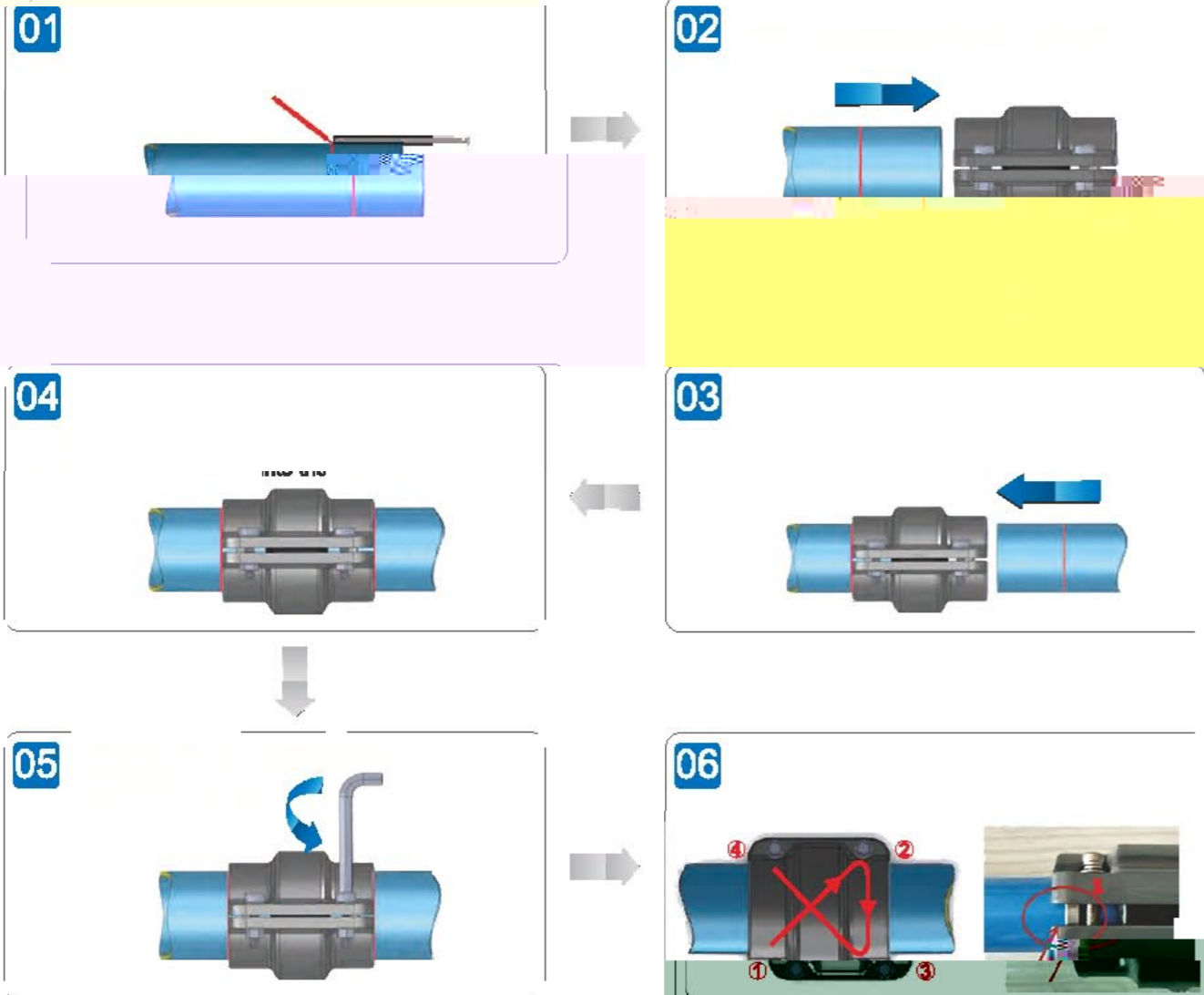

Superior Reliability!



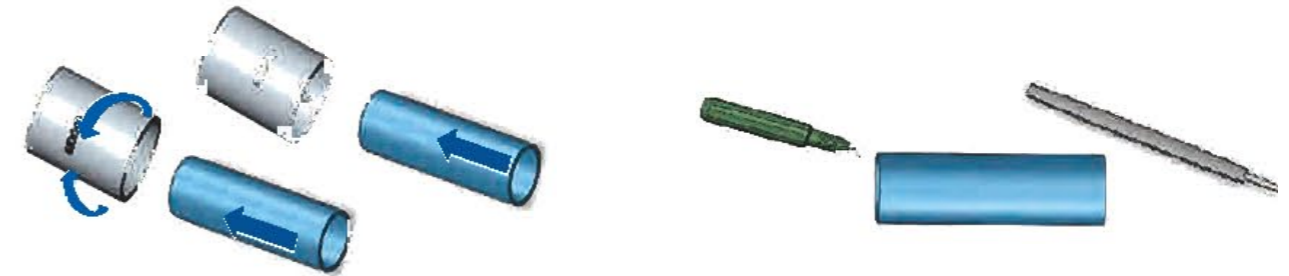
Insertion Depth S For DN20-DN50 Connector

DN	Insertion depth S (mm)
50	29

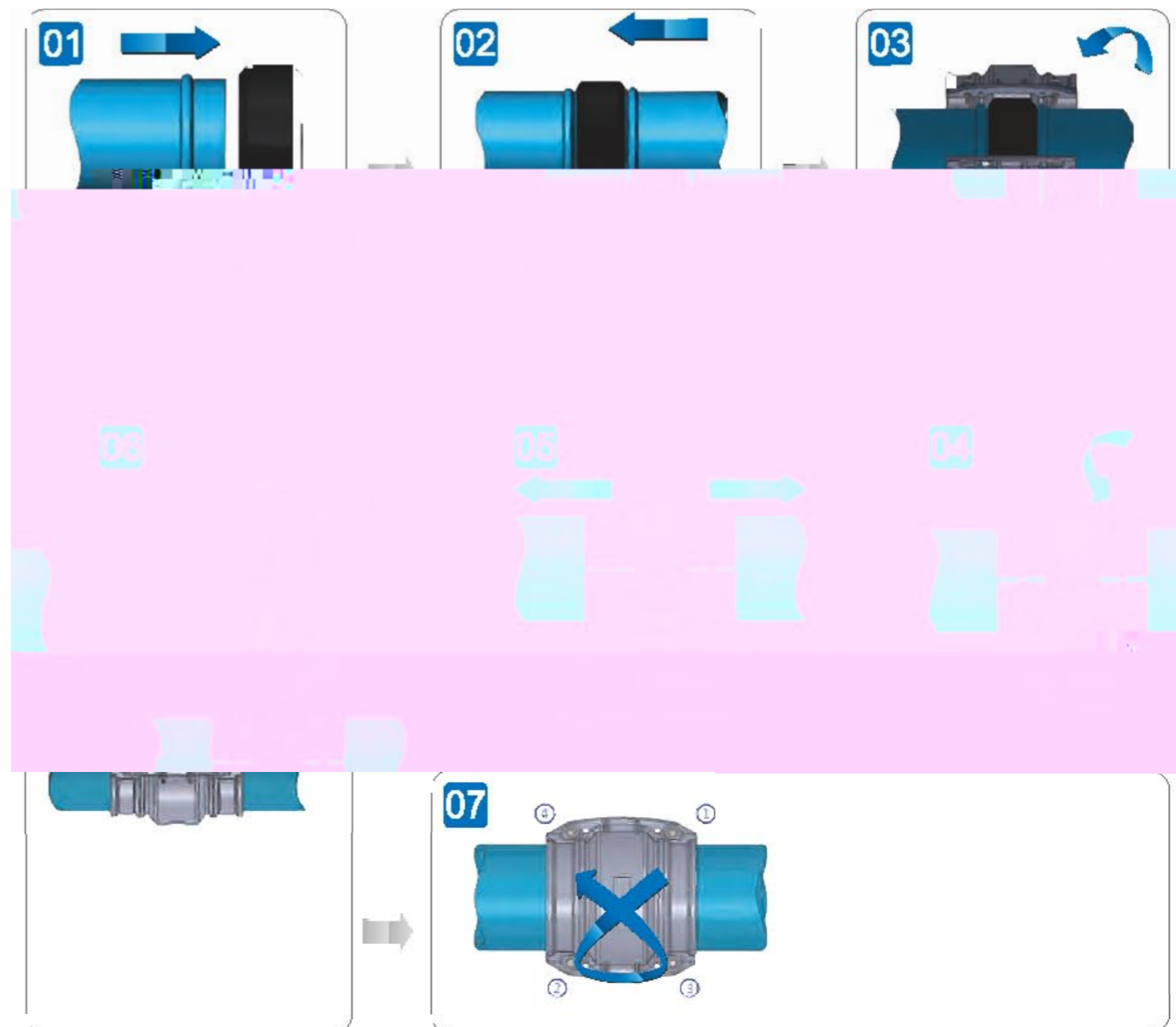
Installation Guide for DN20-DN50



Deburr & Chamfer The Outer and Inner Edges Before Installation



Installation Guide for DN63-DN200



Hand-held hydraulic lugging machine operation requirements



Manually open the jaws of the clamp and insert the aluminum pipe into the clamp as far as possible.
 Release the jaws. Press the trigger and crimp the pipe until a "snap" sound is heard.
 Re-open the two jaws to remove the pipe and rotate the pipe slightly. Put the jaw side to the mark position.
 Renew the operation until the required minimum number of lugs for each diameter is finished.

Number of lugs for each diameter:

AIRPIPE	DN63	DN80	DN100	DN150	DN200
	5	6	6	6	2

Note: Do not overlap the lug!

DN	H(mm)
63	3.0-3.3
80	3.0-3.3
100	3.0-3.3
150	3.0-3.3
200	3.0-3.3



Sizing Chart for Quick Drops

Drill	Drill Holder	DN(MM)	Quick Drops (PN)
301 35 0005 01	301 35 0008 08	φ16	302 10 0201 04 302 10 0202 03 302 11 0200 03 302 11 0401 03
301 35 0005 01	301 35 0008 07	φ22	302 10 0401 04 302 10 0402 04 302 11 0400 03 302 10 0602 01 302 10 0701 01 302 10 0702 01 302 10 0801 01 302 10 0802 01 302 10 0801 01 302 10 1002 01 302 10 1102 01
301 35 0005 01	301 35 0008 03	φ26	302 10 0801 01 302 10 0802 01 302 10 1001 01 302 11 0801 01 302 11 0700 01 302 11 0701 01
301 35 0005 02	301 35 0008 04	φ28	302 11 0500 01 302 11 0501 01 302 11 0800 01
301 35 0005 02	301 35 0008 05	φ38	302 10 0804 01
301 35 0005 02	301 35 0008 05	φ51	302 10 1004 01 302 10 1005 01 302 10 1104 01 302 10 1105 01

- The following table is based on a closed-loop pipe system.
- Working pressure is 8bar and pressure drop is 0.4bar, flow speed not taken into account.

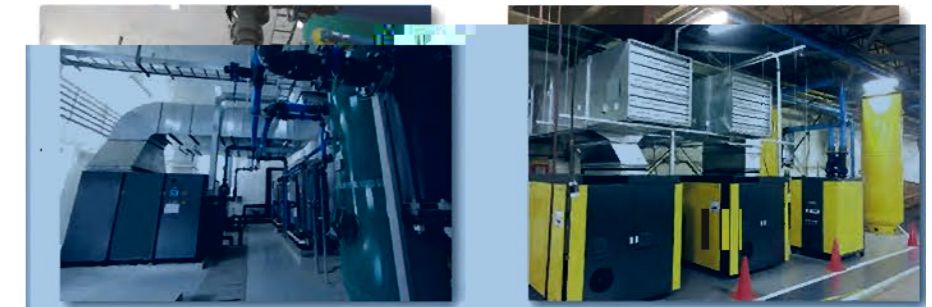
Flow N m ³ /h	Length									
	50M	100M	150M	300M	500M	750M	1000M	1300M	1600M	2000M
10	20	20	20	20	20	20	20	25	25	25
30	20	20	20	25	25	25	25	25	25	40
50	20	25	25	25	25	25	25	40	40	40
70	25	25	25	25	40	40	40	40	40	40
100	25	25	25	40	40	40	40	40	40	50
150	25	40	40	40	40	40	40	50	50	50
250	40	40	40	40	50	50	50	50	50	50
350	40	40	40	50	50	50	50	50	50	50
500	40	40	50	50	50	50	50	50	50	50
750	40	50	50	50	50	50	50	50	50	50
1000	50	50	50	50	50	50	50	50	50	50
1250	50	50	50	50	50	50	50	50	50	50
1500	50	50	50	50	50	50	50	50	50	50
1750	50	50	50	50	50	50	50	50	50	50
2000	50	50	50	50	50	50	50	50	50	50
2500	50	50	50	50	50	50	50	50	50	50
3000	50	50	50	50	50	50	50	50	50	50
3500	50	50	50	50	50	50	50	50	50	50
4000	50	50	50	50	50	50	50	50	50	50
4500	50	50	50	50	50	50	50	50	50	50
5000	50	50	50	50	50	50	50	50	50	50
5500	50	50	50	50	50	50	50	50	50	50
6000	50	50	50	50	50	50	50	50	50	50
6500	50	50	50	50	50	50	50	50	50	50
7000	50	50	50	50	50	50	50	50	50	50
7200	50	50	50	50	50	50	50	50	50	50
8000	50	50	50	50	50	50	50	50	50	50
8500	50	50	50	50	50	50	50	50	50	50
10000	50	50	50	50	50	50	50	50	50	50
12000	50	50	50	50	50	50	50	50	50	50

Technical Specifications

- Max. working pressure: 15bar (-20°C~ +80°C), 16bar (-20°C~ +45°C)
Max. working pressure for DN200 is 13bar.
- Vacuum: 1mbar (absolute pressure).
- Working temperature: -20°C ~ +80°C.
- Suitable fluids: compressed air, oil-free or lubricated, wet, vacuum, inert gases.
- Fireproof and suitable for outdoor applications.

Qualification & Standards

2014/68/EU, ASME B31.1, TUV, GB/T4437.1-2000, EN755-8, TS, U64, ISO 8573-1



Engineered for Superior Performance

- We are committed to provide superior products and service.
- R&D is a continuous process linked to real-world conditions & market feedback.
- Always customer oriented, from design production to sales and service.

we are at your SERVICE

